

Leader  Coach

TINA SCHAAF

LEAD WITH I AM

Founder of The Schaaf Group

Creator & Founder of
The Executives Agent™

Executive Coach. Speaker.
Identity Activator.





SHORT BIO

Tina Schaaf is an identity-based leadership coach and the founder of The Executives Agent™ and The Schaaf Group. With 20+ years of experience in executive coaching, executive search, speaking and leadership development, she helps high-level professionals lead from alignment, clarify identity, claim value and commit to a future aligned with their truth and calling. She speaks with conviction, compassion, and spiritual depth-bridging personal truth with leadership transformation.

MEDIUM BIO

Tina Schaaf is an executive coach, keynote speaker, and the founder of The Executives Agent™. With over two decades of experience across executive recruitment, executive coaching, and identity development, she has guided hundreds of executives, founders, and leaders through career transitions and reinvention. Her message blends corporate insight with soul-level clarity, inviting audiences to lead with identity, not performance.

Tina's work isn't hype. It's disruption 'by design' - rooted in faith, truth, and purpose - designed transformation.

LONG BIO

Tina Schaaf is the Founder of The Executives Agent™ and The Schaaf Group. She is a transformational executive coach who created a process to guide executives to clarity, identity "I AM" and a designed future.

With over 20 years of experience spanning executive recruitment, leadership development, and career strategy, Tina brings a unique blend of strategic insight and spiritual guidance to every room she enters. Tina is known for being more than a coach. She's a mirror, a guide, and a voice of integrity in a world that often rewards performance over presence. Her work helps high-level professionals move beyond burnout, misalignment, and self-doubt-toward confidence, clarity, identity-led leadership, and commitment. She has spoken on stages across women's leadership, faith, business, and career development, including intimate executive retreats, high-level masterminds, and corporate board rooms.

SPEAKING TOPICS:

The Power of 'I AM' in Your Career

What it means to lead from identity, not performance and why that changes everything.

Disruption by Design

Why your second act may be the most aligned chapter of your life and how to step into it with courage.

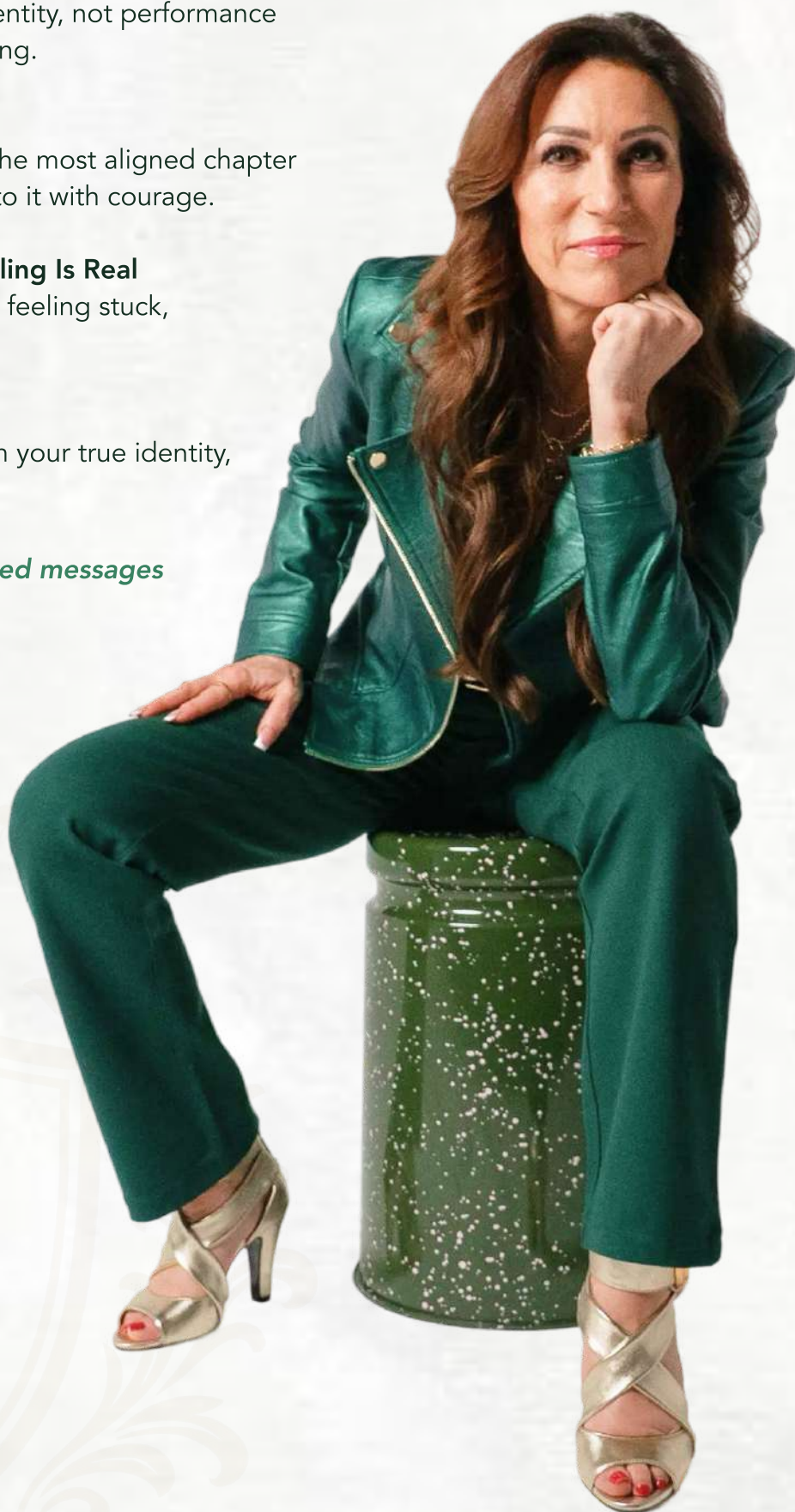
Career Fog: What You're Feeling Is Real

A powerful reframe for leaders feeling stuck, misaligned, or uncertain.

Your Career, Reimagined

Letting go of titles to lead from your true identity, clarity, and purpose.

**Custom topics and faith-based messages available upon request.*



IDEAL AUDIENCE AND EVENTS

- Leadership Summits
- Faith-Based Conferences
- Women's Empowerment Events
- Executive Retreats
- Corporate Keynotes
- Internal Development Events (C-suite, Senior Leadership, HR, Team Alignment)
- Podcasts and Media Interviews



FREQUENTLY ASKED QUESTIONS

1. What is Tina's typical audience profile?

Tina speaks primarily to high-achieving executives, entrepreneurs, and leadership teams who have reached the pinnacle of "success" but are grappling with a sense of misalignment or a "what's next" void. Her message resonates most with those ready to move beyond corporate titles into authentic, legacy-driven leadership.

2. Does Tina offer customized keynote presentations?

Absolutely. While Tina has signature pillars—such as *The Vortex of Clarity* and *Leading with I AM*—she works closely with event organizers to tailor her message to the specific themes of the conference or the current cultural climate of the organization.

3. What is Tina's speaking style?

Tina's speaking style blends grounded presence with catalytic, deeply activating insight. She combines executive-level strategy with raw human truth, meeting audiences where they are while challenging them to rise beyond it. Clear, direct, and emotionally intelligent, she engages rather than performs, creating psychological safety and inviting honest self-examination, bold reframing, and meaningful action. Drawing on her background in executive search and leadership coaching, Tina speaks fluently to high-achievers navigating success, transition, or misalignment, naming what others avoid with compassion, credibility, and conviction. Her talks are strategic wake-up calls that leave audiences clarified, anchored, and equipped to lead, pivot, or recommit with intention.

4. What are the technical and A/V requirements for her sessions?

To ensure the best experience, Tina typically requires a wireless lapel or headset microphone and a high-quality sound system for potential audio/visual elements. Depending on the venue size, she prefers a stage setup that allows her to move and engage directly with the audience. Specific technical riders are provided upon booking.

Book Tina Schaaf

To book Tina for your event, media appearance, or corporate training:

Email: info@theexecutivesagent.com

Website: www.theexecutivesagent.com

Instagram: [@executivesagent](https://www.instagram.com/executivesagent)

